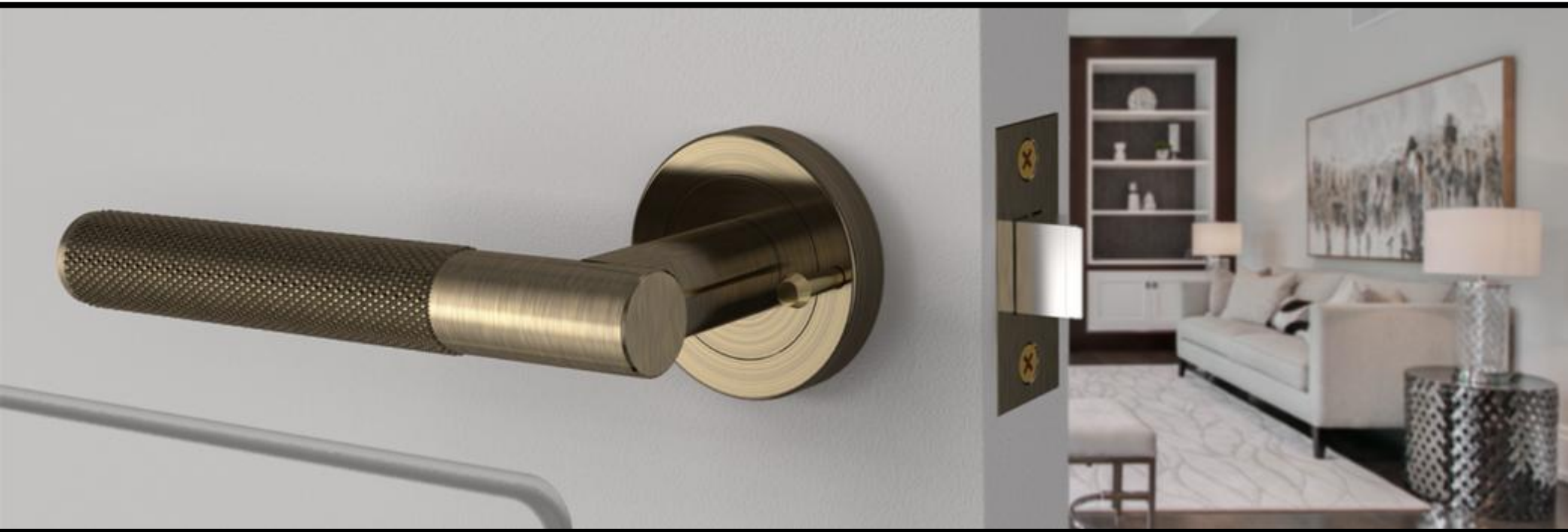


HUNTA[®]

Product Guide 2025



t: 01924 942 350

www.huntahardware.com

e: sales@huntahardware.com

Finish Guide



ABR

Antique
Bronze



BM

Black Matt



BNL

Black Nickel



BNPCP

Black Nickel /
Polished
Chrome



COP

Copper



GG

Graphite
Grey



MBR

Matt Bronze



NP

Nickel Plated



PAA

Polished
Anodised
Alum.



PCP

Polished
Chrome
Plated



PCSCP

Polished Chrome
/ Satin Chrome



PCSNP

Polished Chrome
/ Satin Nickel



PEB

Polished
Electro Brass



PG

Polished
Gold



PNP

Polished
Nickel Plated



PNSNP

Polished
Nickel /
Satin Nickel



PSS

Polished
Stainless
Steel



SNP

Satin Nickel
Plated



SAA

Satin
Anodised
Aluminium



SB

Satin Brass



SBR

Satin Bronze



SCP

Satin
Chrome
Plated



SSPSS

Satin
Stainless /
Polished
Stainless



SSS

Satin
Stainless
Steel



H2001PNSNP
Ursa Lever on rose PNP-SNP



H2002PCP
Lobo Lever on rose PCP



H2002PNSNP
Lobo Lever on rose PNP-SNP



H2003PNSNP
Lagus Lever on rose PNP-SNP



H2004PNSNP
Tucana Lever on rose PNP-SNP



H2301PCSCP
Columba Lever on rose PCP-SCP

Key Features

- 'Project' aluminium lever on zinc round rose
- Modern dual finish designs
- Supplied with bolt through & woodscrew fixings as standard
- Suitable for door thickness 34-44mm
- Door packs are available in this range



H2101PNSNP



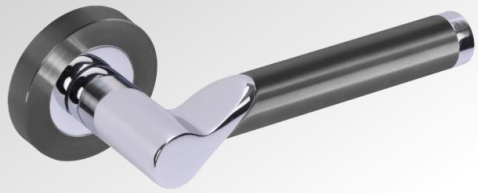
H2102PNSNP



H2103PNSNP



H2101PCP



H2302BNPCP
Hydrus Lever on rose BN-PCP



H2302PCSCP
Hydrus Lever on rose PCP-SCP



H2303PCSCP
Lacerta Lever on rose PCP-SCP



H2304PCSCP
Volans Lever on rose PCP-SCP

Key Features

- Durable zinc lever on zinc round rose
- Modern dual finish design
- Supplied with bolt through & woodscrew fixings as standard
- Suitable for door thickness 34-44mm
- Door packs are available in this range



H2101PCSCP



H2305PCSCP
Corax Lever on rose PCP-SCP



H2102PCSCP



H2103PCSCP



H2306PCP
Simia Lever on rose PCP



H2201BM
Lobo Lever Latch BM



H2201PCP
Lobo Lever Latch PCP



H2202BM
Lobo Lever Bathroom BM



Key Features

- Contract Lever Furniture
- Typically specified with Flow contract latches & bathroom locks
- Suitable for 35-44mm doors



H2202PCP
Lobo Lever Bathroom PCP



H2203PCP
Avis Lever Lock PCP



H2204PCP
Avis Lever Latch PCP



H2205PCP
Avis Lever Bathroom PCP

75x50mm Ball Bearing Mild Steel Hinges



H3001ABR



H3001BM



H3001BNL



H3001PCP



H3001SB



H3001SCP



H3001SNP



Key Features

- High quality finish
- Finish suited to lever range
- Button tipped
- Boxed in pairs
- Supplied with woodscrews

Contract Mortice Bathroom Locks



H1001NP
65mm Nickel Plated

H1002NP
76mm Nickel Plated



Contract 3 Lever Mortice Sashlocks



H1003NP
65mm Nickel Plated

H1004NP
76mm Nickel Plated

Key Features

- Suitable for horizontal b/t fixings
- Supplied with woodscrew fixings
- Adjustable strike plate to avoid door rattle
- Light duty, suitable for sprung furniture
- Sashlocks supplied with 2 keys
- Locks supplied with dust keeps
- Locks boxed in 10's / 50's
- Latches boxed in 20's / 200's

Contract Tubular Mortice Latches



H1103NP
63mm Nickel Plated

H1104NP
76mm Nickel Plated



H1105NP
63mm Nickel Plated c/w Box Keep

H1106NP
76mm Nickel Plated c/w Box Keep

HARDWARE RANGE
FLOW

CE / UKCA Mortice Bathroom Locks



H1005SNP
65mm Satin Nickel Plated

H1006SNP
76mm Satin Nickel Plated



CE / UKCA 3 Lever Mortice Sashlocks



H1007SNP
65mm Satin Nickel Plated

H1008SNP
76mm Satin Nickel Plated

Key Features

- UKCA, CE Marked and Certifire
- EN12209:2003 Cycle & Durability tested
- EN-1634-1 Fire Tested FD30-60
- Suitable for bolt through fixings 32-38mm centres
- Fully Lipped Forend & Striker Packs available in various finishes to suit
- Fully lipped strike plate

Forend & Striker Kits



H1020ABR



H1020BMR



H1020BNL



H1020SB



CE / UKCA Tubular Mortise Latches



H1113ABR - 63mm

H1114ABR - 76mm

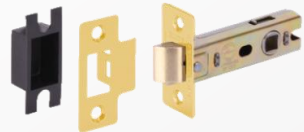


H1113BM - 63mm

H1114BM - 76mm



H1114BNL - 76mm



H1114SB - 76mm



H1113SNP - 63mm

H1114SNP - 76mm



H1118SNP - 63mm

H1119SNP - 76mm



Key Features

- UKCA, CE Marked and Certifire
- EN12209:2003 Cycle & Durability tested
- EN-1634-1 Fire Tested FD30-60
- Suitable for bolt through fixings 32-38mm centres



75mm Projecting Door Stops



H4001ABR



H4001BM



H4001BNL



H4001PCP



H4001SCP



H4001SNP



115mm Extended Projecting Door Stops



H4007BM



H4007PCP



H4007SCP

75mm Concealed Fix. Projecting Door Stops



H4002PCP



H4002SCP



H4002SNP

Key Features

- Zinc base material
- Supplied with fixings as standard

Half Moon Floor Door Stops



H4003ABR



H4003BM



H4003BNL



H4003PCP

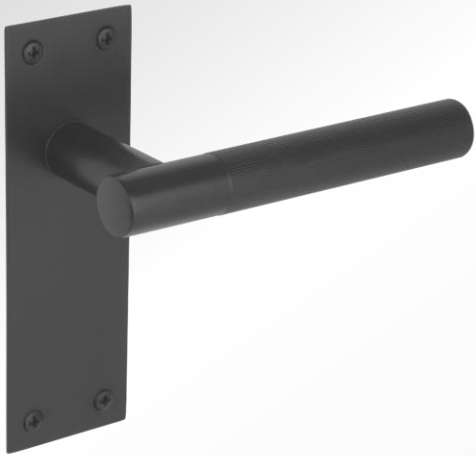


H4003SCP



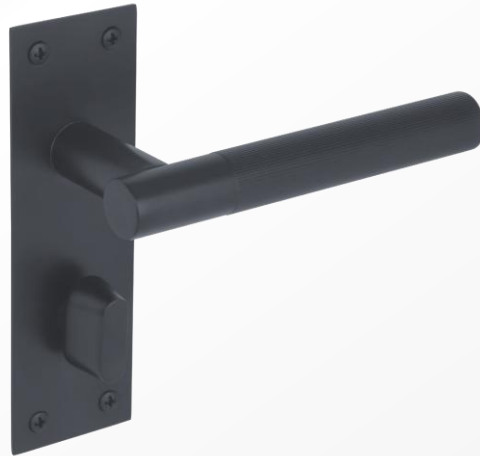
H4003SNP

Levada Linear Lever On Flat Rectangular Plate – S/Steel



H2252BM

Latch



H2253BM

Bathroom



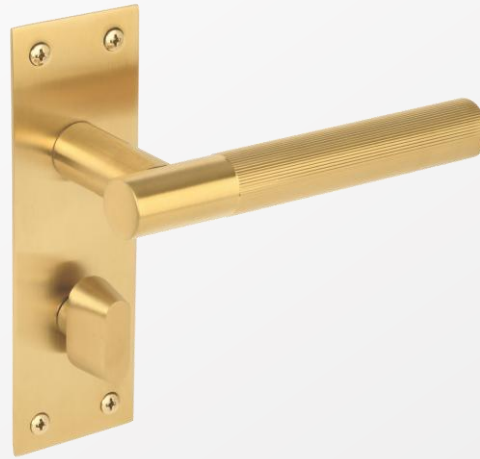
H2251BM

Lock



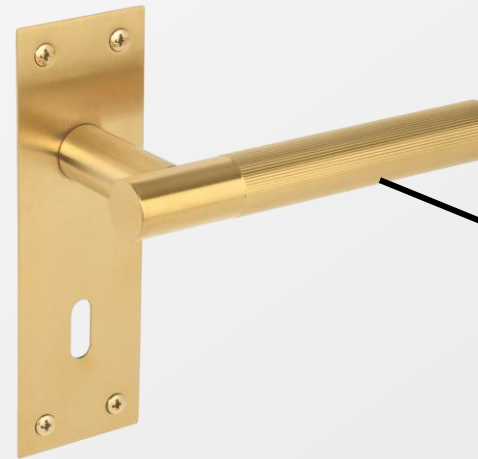
H2252SB

Latch



H2253SB

Bathroom



H2251SB

Lock

Raida Lever On Rose



H2050BNPCP

Passage



H2051BNPCP



H2050PCSCP

Passage



H2051PCSCP



Key Features

Applies to all Hunta Designer levers

- Premium aluminium plated lever on 52x10mm zinc rose
- Modern finishes
- Supplied with 8x8x100 slotted spindle
- Supplied with bolt through & woodscrew fixings as standard
- 8 Point compass fixing system
- Suitable for door thickness 34-44mm



Zena Lever On Rose



H2054ABR

Passage

H2055ABR



H2054PCP

Passage

H2055PCP



H2054BM

Passage

H2055BM



H2054SB

Passage

H2055SB



H2054BNL

Passage

H2055BNL



H2054SCP

Passage

H2055SCP



Nemo Lever On Rose



H2056ABR

Passage

H2057ABR



H2056PCSCP

Passage

H2057PCSCP



H2056BM

Passage

H2057BM



H2056SB

Passage

H2057SB



H2056BNL

Passage

H2057BNL



Evo Knurled & Vida Linear Grip Lever On Rose



H2058ABR

H2059ABR

Passage



H2058BM

H2059BM

Passage



H2058SB

H2059SB

Passage



H2060BM

H2061BM

Passage



Evo & Vida Bathroom Turn & Releases



H2170ABR



H2170BM



H2170SB



H2180BM

Matches Evo Lever

Matches Vida Lever



Evo Knurled



Solus Lever On Rose



H2062ABR

Passage

H2063ABR



H2062BM

Passage

H2063BM



H2062PCP

Passage

H2063PCP



H2062SB

Passage

H2063SB



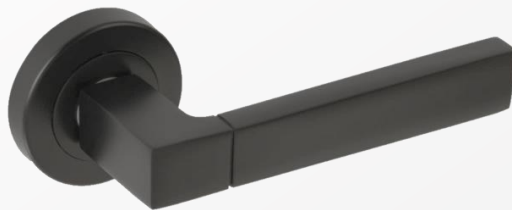
H2062SCP

Passage

H2063SCP

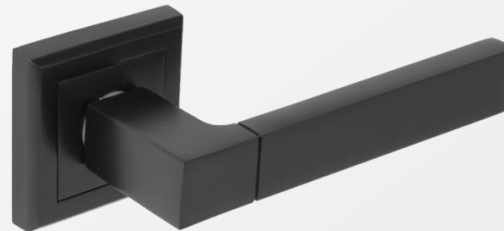


Luxa & Reno Lever On Rose



H2064BM

Passage

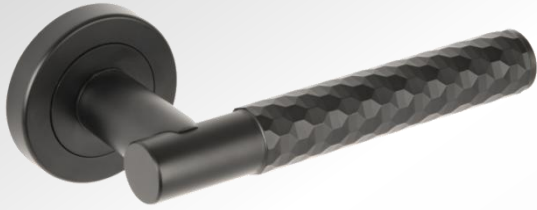


H2066BM

Passage

Roca Lever On Rose

Diamond-cut knurled grip



H2068BM

Passage

H2069BM



H2068MBR

Passage

H2069MBR



Halo Lever On Rose

Ring knurled grip



H2070BM

Passage

H2071BM



H2070MBR

Passage

H2071MBR



HUNTA
DESIGNER

HUNTA®

Door Packs



- *Over 200 door pack variations currently available*
- *Visit our website & use the filters to configure your requirement*
- *With Hunta's door packs you really can have it your way!*

Bathroom Turn & Releases - 5mm spindle



H2150ABR



H2150BM



H2150BNL



H2150BNPCP



H2150PCP



H2150PCSCP



H2150SCP



H2150SB

Escutcheons



H2151ABR



H2151BM



H2151BNL



H2151BNPCP



H2151PCP



H2151PCSCP



H2151SCP



H2151SB



H2152ABR



H2152BM



H2152BNL



H2152BNPCP



H2152PCP



H2152PCSCP



H2152SB



H2152SCP

Tubular Mortice Latches – 76mm



H1107ABR



H1107BM



H1107BNL



H1107PSS



H1107SSS



H1109SSS

Key Features

- 76mm / 63mm (57 / 45mm Backset)
- High quality finish to match levers and accessories
- Premium latch with dust keep
- Bolt-through compatible



Rectangular Privacy Latches – 76mm



H1101ABR



H1101BM



H1101BNL



H1101PCP



H1101SB



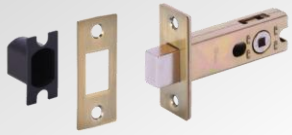
H1101SNP



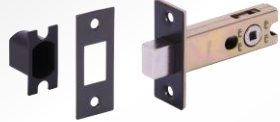
Key Features

- 57mm Backset
- Compatible with Hunta privacy levers
- High quality finish to match levers & accessories
- Push button locking / emergency access
- Easy fit alternative to bathroom lock
- Supplied with Pin & privacy spindle

Rectangular Dead Bolts – 76mm



H1102ABR



H1102BM



H1102BNL



H1102PSS



H1102SSS



H1108PSS



H1108SSS

Accessory Hardware



H1701NP
Adj. Roller Catch



H1702SSS
Hd Adj. Roller Catch



H1705WH
HD Magnetic Catch



H4401PCP H4401SCP
Heavy Handrail Bracket



H4111NP
60mm Mortice
Security Bolt



H4114NP
Security Bolt
Key



H4115PCP H4115SCP
Security Bolt Thumb Turn

Bullet Latches – 76mm



H1302ABR



H1302BM



H1302BNL



H1302PCP



H1302SB



H1302SNP

Bullet Privacy Latches – 76mm



H1305ABR



H1305BM



H1305BNL



H1305PCP



H1305SB



H1305SNP



Key Features

- 57mm Backset installed with 25mm Spade bit (not included)
- Tested to 200,000 cycles
- Fast fit latch – easy to install
- High quality finish to match levers and accessories
- Supplied with round and standard keep
- Rotating latch bolt – pull & twist to reverse
- Box keep included

Key Features

- 57mm Backset installed with 25mm spade bit (not included)
- Compatible with privacy levers only
- Fast fit – easy to install
- Push button locking / emergency access
- Easy fit alternative to bathroom lock
- Rotating latch bolt – pull & twist to reverse
- Supplied with pin & privacy split spindle

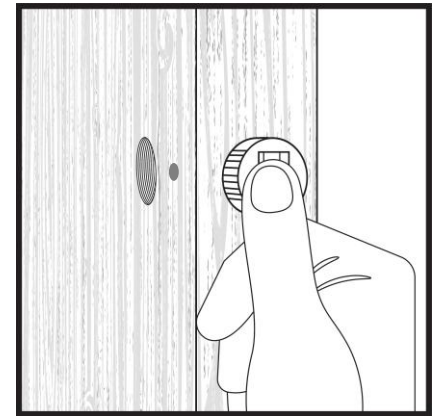
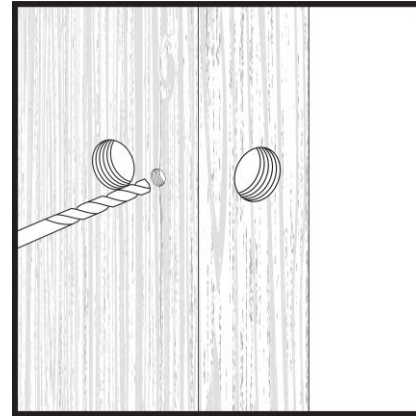
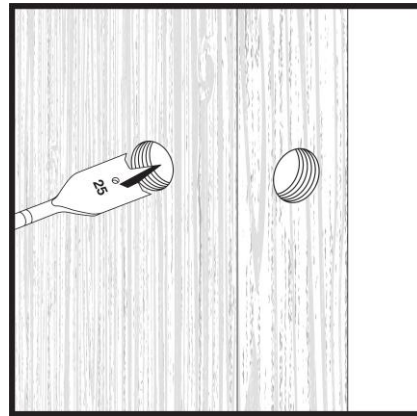
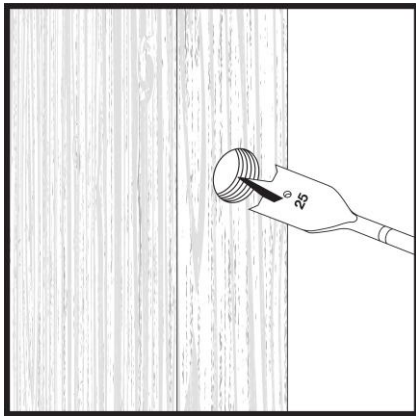


PRESS FOR
PRIVACY

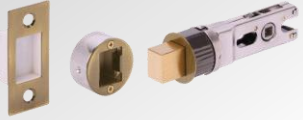


- *Push the button to lock / emergency access from outside*
- *Simply operate the lever from the inside to unlock*
- *Bullet latch supplied with round & rectangular keep options*
- *'Bullet' also available in passage / latch function*

Bullet Privacy Latch - Fast fit. Easy to install...



Bullet Dead Bolts – 76mm



H1304ABR



H1304BM



H1304BNL



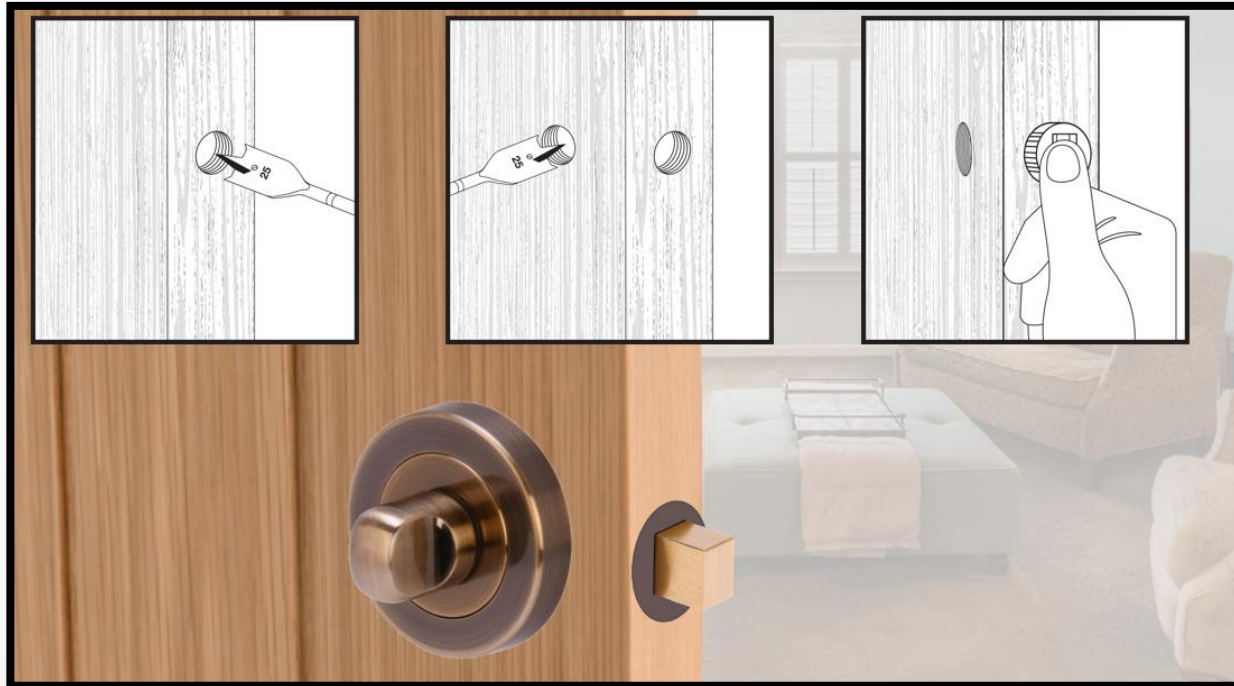
H1304PCP



H1304SB



H1304SNP



Key Features

- 57mm Backset installed with 25mm Spade bit (not included)
- 5mm Spindle / follower
- Fast fit – easy to install
- For use with bathroom turn / release
- High quality finish to match levers and accessories
- Non handed
- Box keep included

Heavy Duty Concealed Magnetic Catch suitable for full size doors
 (e.g. wardrobe/cupboard, double internal doors).



PLS12PRO-SSS

SSS

12mm Concealed Magnetic Catch
 (1 Set - Clam)

PLS24PRO-SSS

SSS

24mm Concealed Magnetic Catch
 (1 Set - Clam)

PLS24PRO-BLK

BLK

24mm Concealed Magnetic Catch
 (1 Set - Clam)

PLS24PROXHD-SSS

SSS

Extra Heavy Duty Concealed
 Magnetic Catch (1 Set - CLAM)

PF10PK

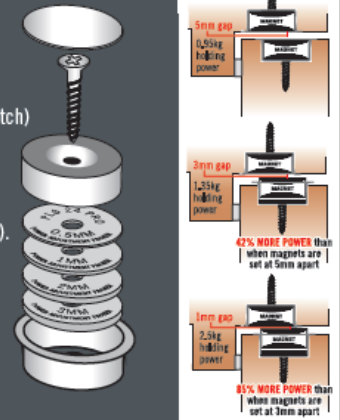
WH

Poron Foam 10 Pack for PLS PRO

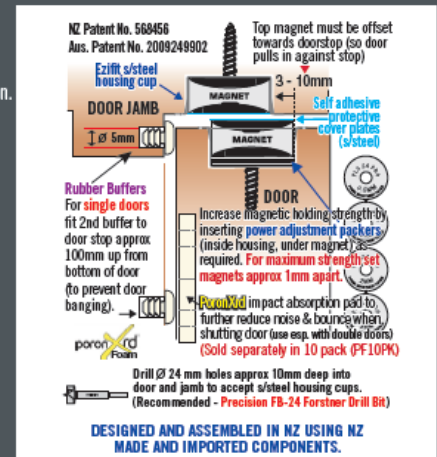


- Can be used anywhere a roller/ball catch etc. would normally be fitted.
- As magnets don't touch (after installation)
 - the catch will never wear out!
 - Lifetime guarantee (for magnetism).
 - can be painted over.
- No latch noise when opening and shutting door (unlike a roller/ball catch)
- Completely concealed when door closed, no unsightly protruding strike plate lip (unlike a roller/ball catch).
- Can be used to help keep problem doors shut (e.g. with weak door closers, electric strikes, weak roller mortice locks, double sliding doors).
- **Quick and easy to install** - No chiseling required. Ezifit s/steel housing cup automatically sets the magnets perfectly parallel to each other, essential for precise power adjustment.
- **Power adjustment packers** increase magnetic holding strength by inserting power adjustment packers (inside housing, under magnet) as required. (See picture). Supplied in four sizes; 0.5mm - 3mm thick, for precise power adjustment.

Power Adjustment Guide:



- **Self Adhesive/Magnetic Cover Plate** (Brushed S/Steel)
 - Protects magnets from impact damage during installation.
 - Protects magnets from corrosion.
 - Conceals magnet and screw head for a more attractive finish.
- **Poron Xrd Foam impact absorption pad** (sold separately)
 - Use (esp. with double doors) to further reduce impact noise and bouncing of door on frame when shutting.
 - Low compression set - After impact, foam pad will return to its original thickness indefinitely.





Euro Profile Deadbolt Lock Sets

With Thumbturn & Keys

Available in Multiple Finishes



H1501BM



H1501PCP



H1501SNP

- ✓ Adjustable 60/70mm backset
- ✓ Suits 35–50mm thick doors
- ✓ Key locking outside
- ✓ Thumbturn operation inside



Sliding Door Privacy Kits

Space-saving lock sets for pocket & sliding doors

- 60mm backset
- 35–55mm thick doors
- Thumbturn inside
- Emergency release outside
- Finger pull included
- Bolt hooks into frame



H1511BM – Round Kit



H1512BM – Square Kit



H1511SNP – Round Kit



H1512SNP – Square Kit



Riva – Steel Knobsets



H9001BM - Entrance



H9001SSS - Entrance



H9002BM - Passage



H9002SSS - Passage



H9003BM - Privacy



H9003SSS - Privacy

Key Features

- Adjustable 60-70mm backset latch
- Suited Entrance, Passage and Privacy functions
- High quality finishes
- Includes strike plate and fixings
- Suitable for commercial and residential applications
- Non handed
- Box keep included

Mantara – Steel Leversets



H9101BM - Entrance



H9101SSS - Entrance



H9102BM - Passage



H9102SSS - Passage



H9103BM - Privacy



H9103SSS - Privacy

Key Features

- Adjustable 60-70mm backset latch
- Suited Entrance, Passage and Privacy functions
- High quality finishes
- Includes strike plate and fixings
- Suitable for commercial and residential applications
- Non handed
- Box keep included



H2401SSS

19mm Return to Door Safety Lever – Sprung SSS

SUS 201



H2402SSS

19mm Mitred Lever – Sprung SSS

SUS 201



H2403SSS

19mm Return to Door Safety Lever – Sprung Grade **EN3** SSS

SUS 304



H2404SSS

Magna Passage SSS

SUS 304



H2405SSS

Magna Privacy SSS

(c/w privacy bullet latch)

SUS 304



H2408SSS

19mm Straight Lever – Sprung SSS

SUS 201



Key Features

Applies to all Hunta Architectural levers

- Satin stainless steel lever on 53x6mm push on SS rose
- 8x8x100mm heso spindle & M6 grub screws
- M4x60mm male & female bolt through fixings & 4 x woodscrews
- Suited Bathroom turn/release sets and escutcheons available
- Suitable for door thickness 34-44mm



HUNTA
ARCHITECTURAL

Kotor Knurled Sprung Lever On Rose



H2406GG
H2407GG



SUS
304



H2406SSS
H2407SSS



SUS
304



Rota Sprung Lever On Rose



H2411BM
H2412BM



SUS
201



H2411SSS
H2412SSS



SUS
201



Bathroom Turn & Releases - 5mm spindle



H2501BM



H2501GG



H2501SSS



H2502BM



H2502SSS



H2503BM



H2503GG



H2503SSS



H2504BM



H2504SSS

SUS
304



Escutcheons



H2505BM



H2505GG



H2505SSS



H2506BM



H2506GG



H2506SSS



H2506SSS

SUS
201



HUNTA
ARCHITECTURAL

75x50mm Stainless Steel Ball Bearing Hinges



H3003PSS - Pair

H3002PSS - 3 pack



H3003SSS - Pair

H3002SSS - 3 pack

SUS
201



102x76mm CE13 Stainless Steel Ball Bearing Hinges



H3501PSS - Pair

H3502PSS - 3 pack



H3501SSS - Pair

H3502SSS - 3 pack



SUS
201



H3503PSS - Pair



H3503SSS - Pair

Round Bar Pull Handles – Bolt Through



H4302SSS
225mm x 19mm Dia

H4304SSS
425mm x 19mm Dia

H4303SSS
300mm x 19mm Dia

H4305SSS
600mm x 19mm Dia



H4306SSS
Covered Roses to Suit

SUS
201



Guardsman Pull Handles – Bolt Through

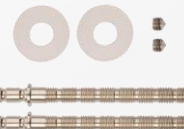


H4307SSS
400 x 19mm Dia (300mm Centres)

H4308SSS
600 x 19mm Dia (450mm Centres)

H4309SSS
1000 x 25mm Dia (900mm Centres)

SUS
304



H4310SSS
Back to Back Fixing Pack to Suit

Pictogram Discs – 70mm Dia.



H4201SSS



H4202SSS



H4203SSS



H4204SSS



H4205SSS



H4206SSS



H4207SSS



H4208SSS



H4209SSS



H4210SSS



H4211SSS



Door Stops



H4004BM



H4004SB



H4004SSS

Collared Door Stop - Concealed Fix



H4005SSS

Half Moon Floor Door Stop



H4006SSS

85mm Projecting Door Stop



HUNTA
ARCHITECTURAL

Accessory Hardware



SUS
201

H4402SSS
SSS 90mm DDA Handrail Bracket



SUS
304

H4601SSS
SSS Euro Cylinder Pull



SUS
304

H4650SSS
SSS Square Corner Flush Pull
(120x50x15mm)



SUS
201

H4901SSS
SSS Buffered Hat & Coat Hook



H4151SNP
SNP Dust Excluding Socket